

Construction history of the home at 135 Hilderthorpe Road, Hilderthorpe, Oamaru.

A school was constructed to begin holding classes in 1923. The Hilderthorpe community also used the school-room for events such as euchre evenings, weekend dances.



To begin with there were 2 sets of North-facing windows, for best lighting and solar heating. Inside there were windows to the vestibule. These remain today. North window sets were increased to 3.



Opening Day 14th September 1923

Not all windows open now but 2 of the lowest interior windows open. On the North side (not seen here) some of the upper original windows open using remote control of concealed electric motors. The lower windows have been replaced by aluminium framed casement windows which all open.

During the years the classroom was upgraded by the MoE. No records are to hand giving details with the LIM reporting only listing events since 1978. Relating to the classroom the LIM report records “Alterations & Additions” in 1995 and “Upgrade of water supply” in 1997.

In 1979 a second classroom was brought on site and this was removed in 2001.



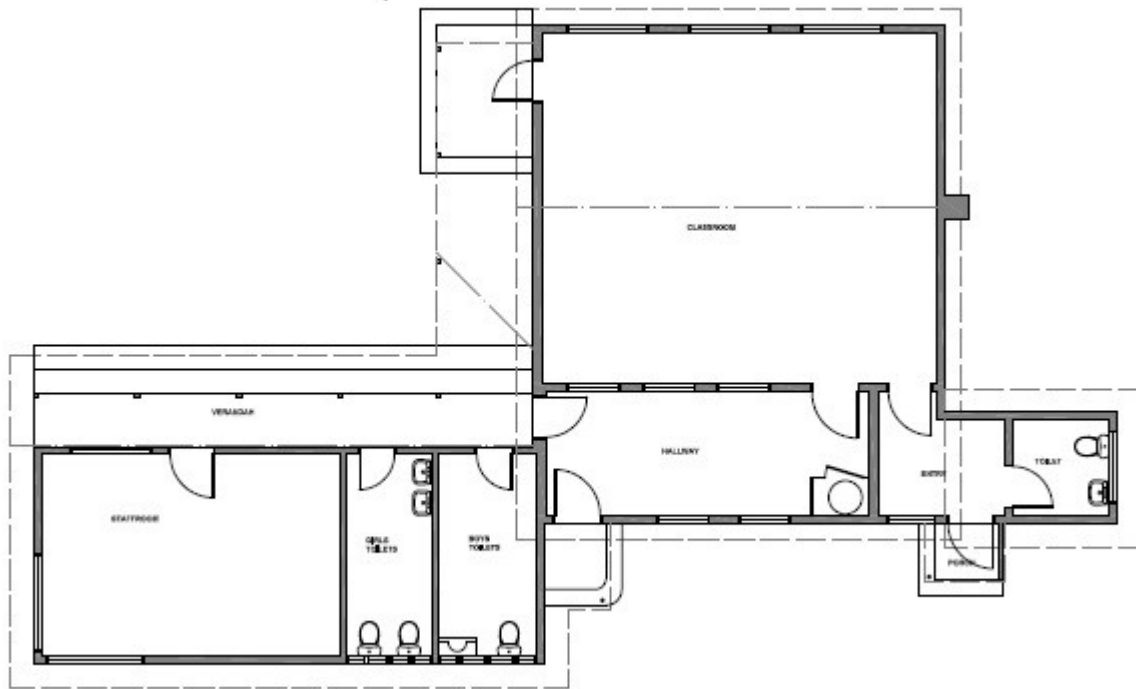
This photograph of both classrooms, date 1985, shows the original classroom with attached toilets (which became bathroom and ensuite in the 2010 conversion). The toilet extension was further extended to have a staffroom/kitchen/reading room in 1995.



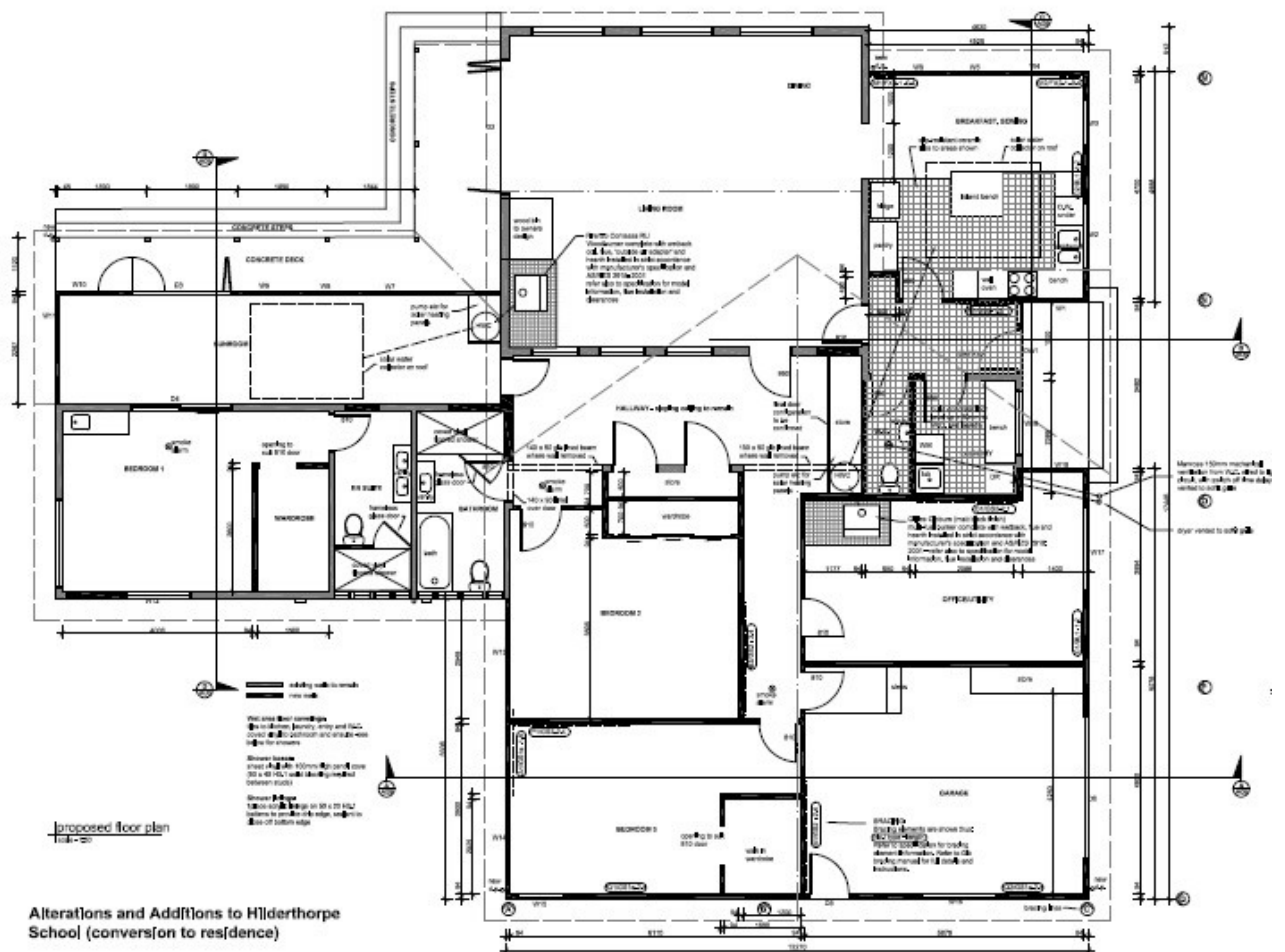
A staff toilet was also built on the east end (just out of view at left).

This building remained in 2007 when we took ownership and lived in the Principal’s residence (out of shot to left). The architect drew plans for its conversion (see next) and a consent was granted subject to removal of the Principal’s house.

Architect's drawings:



The school as it existed in 2009.



The proposed conversion in 2009.
Conversion was completed in 2010.

Construction 2009



View from East looking westward.



View from West showing the redo of the porch area.
The old porch became a sunroom giving access to the master bedroom
(which was the old staffroom).

View from East of house in 2019.



Taken for a calendar we made for 2020.

